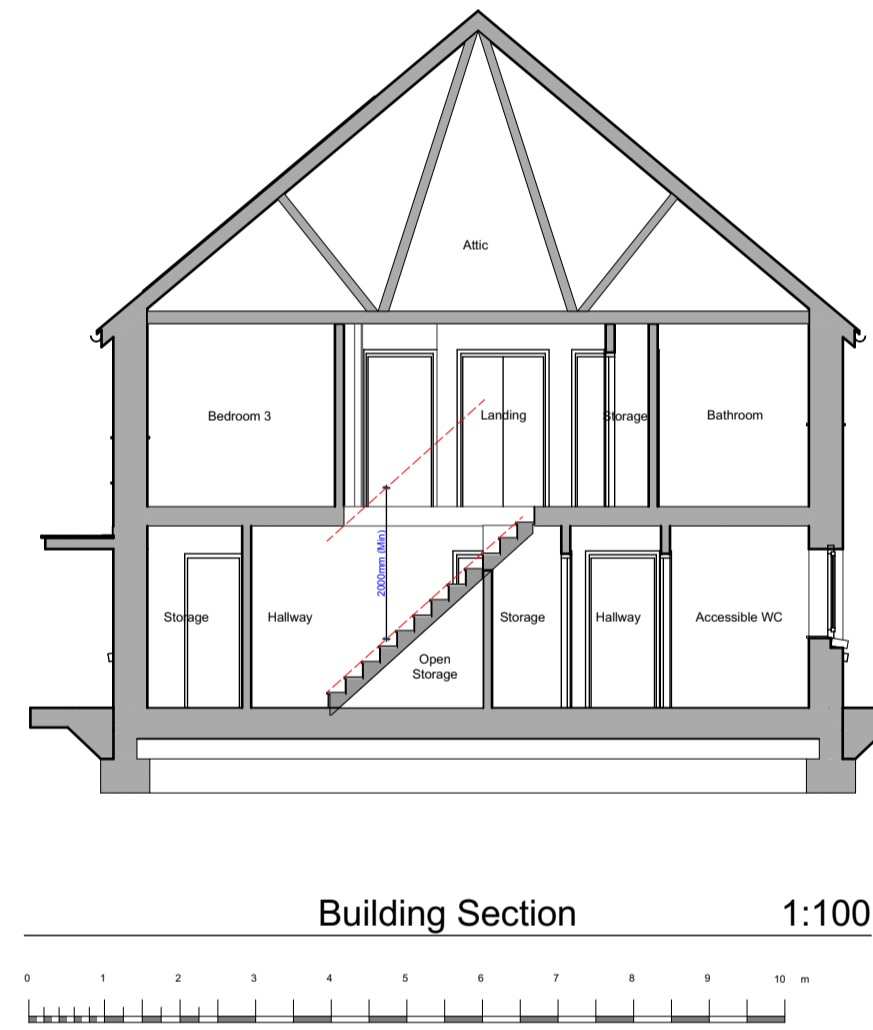


Proposed Residential Development at Former Cleddau Bridge Hotel, Pembroke Dock, SA72 6HZ

"Planning Drawings" - 5P3B Semi-Detached House Plots 1-2, 13-14, 30-31



Floor Area: 5P3B
Total Gross Internal Ground Floor Area = 46.811m ² (503.869sqft)
Total Gross Internal First Floor Area = 46.807m ² (503.826sqft)
Total Gross Internal Area = 93.618m ² (1007.696sqft)
Storage Areas: 5P3B
(Storage areas highlighted in light green colour, excluding areas provided for Cylinder and Services)
[Required Storage Space = 2.5m³]
Ground Floor Storage Area = 1.36m ²
First Floor Storage Area = 1.30m ²
Total dwelling Storage Area = 2.66m ²



Revision:	Date:	By:	Notes:

Notes:
 1. To be read in conjunction with 'proposed house type external finishes site plan' dwg. no. R594 P-07 for individual plot finishes.
 2. To be read in conjunction with 'proposed house type external finishes drawing' dwg. no. R594 P-08.



Client:
Castell Group

Job Title:
Proposed Residential Development at Former Cleddau Bridge Hotel, Pembroke Dock, SA72 6HZ

Scale: Noted
Date: Aug 2024
Drawn: KP/RH

Drawing Title:
5P3B Semi-Detached House (Plots 1-2, 13-14, 30-31) - Plans, Sections, Elevations

R594 P-15