

# Proposed Residential Development at Former Cleddau Bridge Hotel, Pembroke Dock, SA72 6HZ

## "Planning Drawings" - 4P2B Terraced House Plots 15-17



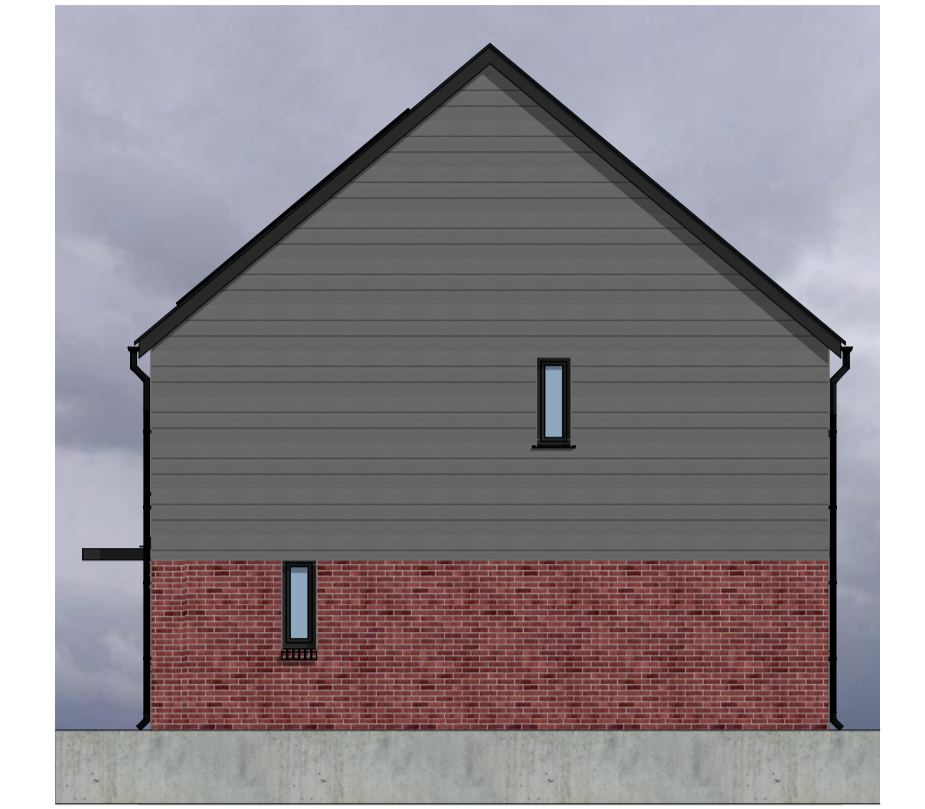
Front Elevation 1:100



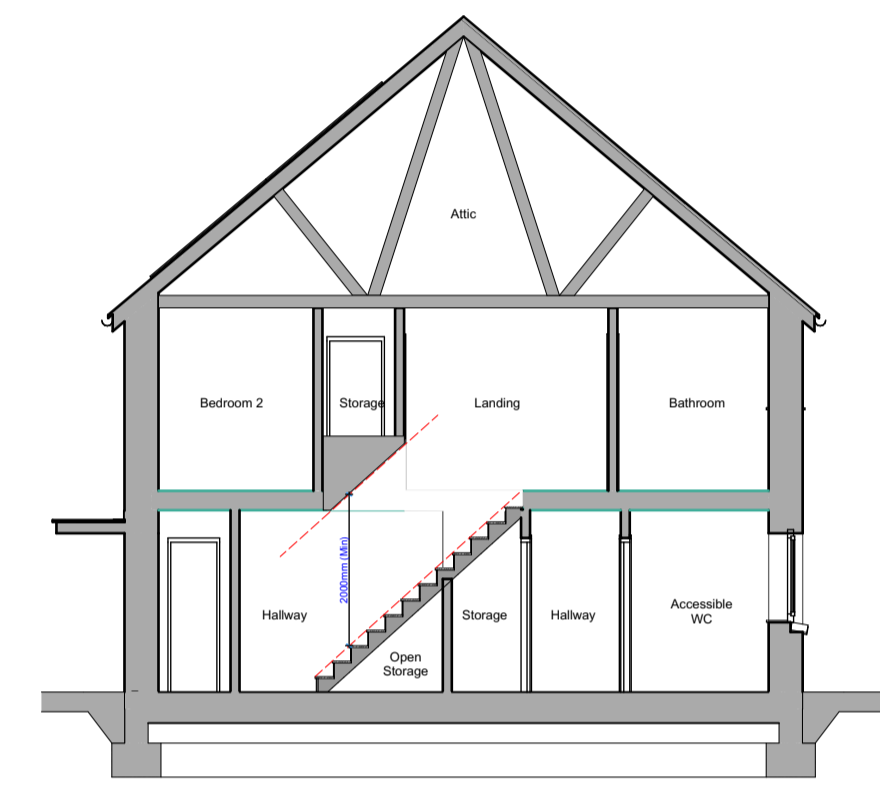
Left-Side Elevation 1:100



Rear Elevation 1:100



Right-Side Elevation 1:100



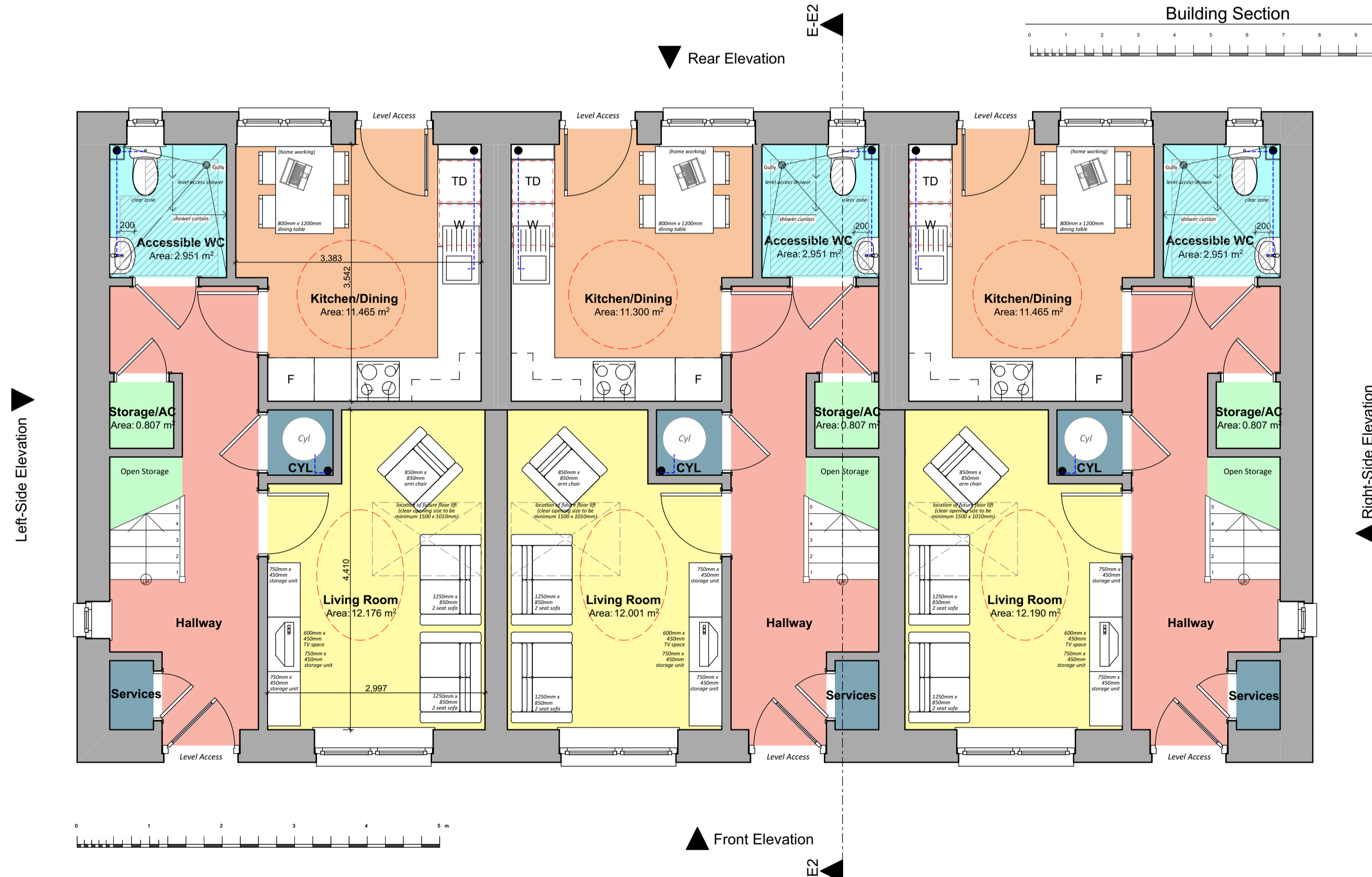
Building Section 1:100

**Floor Area: 4P2B**

Total Gross Internal Ground Floor Area = 41.571m<sup>2</sup> (447.467sqft)  
 Total Gross Internal First Floor Area = 41.350m<sup>2</sup> (445.088sqft)  
 Total Gross Internal Area = 82.921m<sup>2</sup> (892.554sqft)

**Storage Areas: 4P2B**

(Storage areas highlighted in light green colour, excluding areas provided for Cylinder and Services)  
**Required Storage Space = 2.5m<sup>3</sup>**  
 Ground Floor Storage Area = 0.81m<sup>2</sup>  
 First Floor Storage Area = 2.5m<sup>2</sup>  
 Total dwelling Storage Area = 3.31m<sup>2</sup>



Ground Floor Plan 1:50



First Floor Plan 1:50

Revision:	Date:	By:	Notes:
			1. To be read in conjunction with 'proposed house type external finishes site plan' dwg. no. R594 P-07 for individual plot finishes. 2. To be read in conjunction with 'proposed house type external finishes drawing' dwg. no. R594 P-08.



Client: Castell Group	Scale: Noted Date: Aug 2024 Drawn: KP/RH	Drawing Title: PLANNING DRAWINGS - 4P2B Terraced House (Plots 15-17) - Plans, Section, Elevations
Job Title: Proposed Residential Development at Former Cleddau Bridge Hotel, Pembroke Dock, SA72 6HZ	<b>R594 P-14</b>	