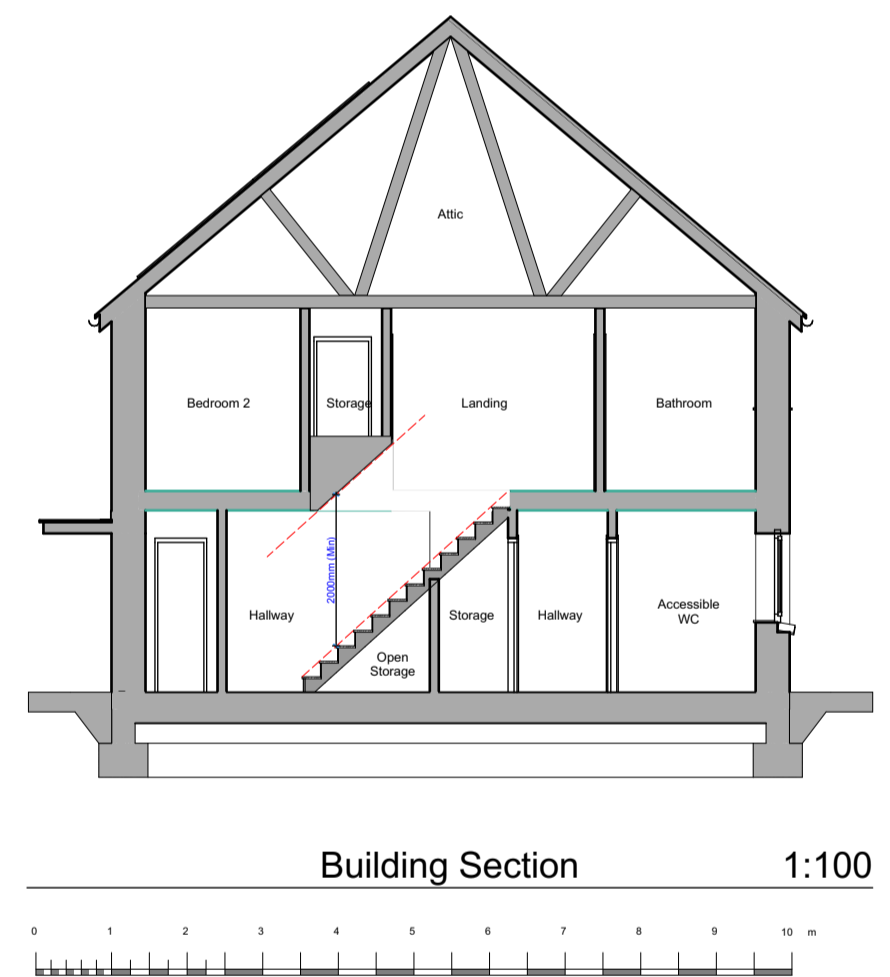


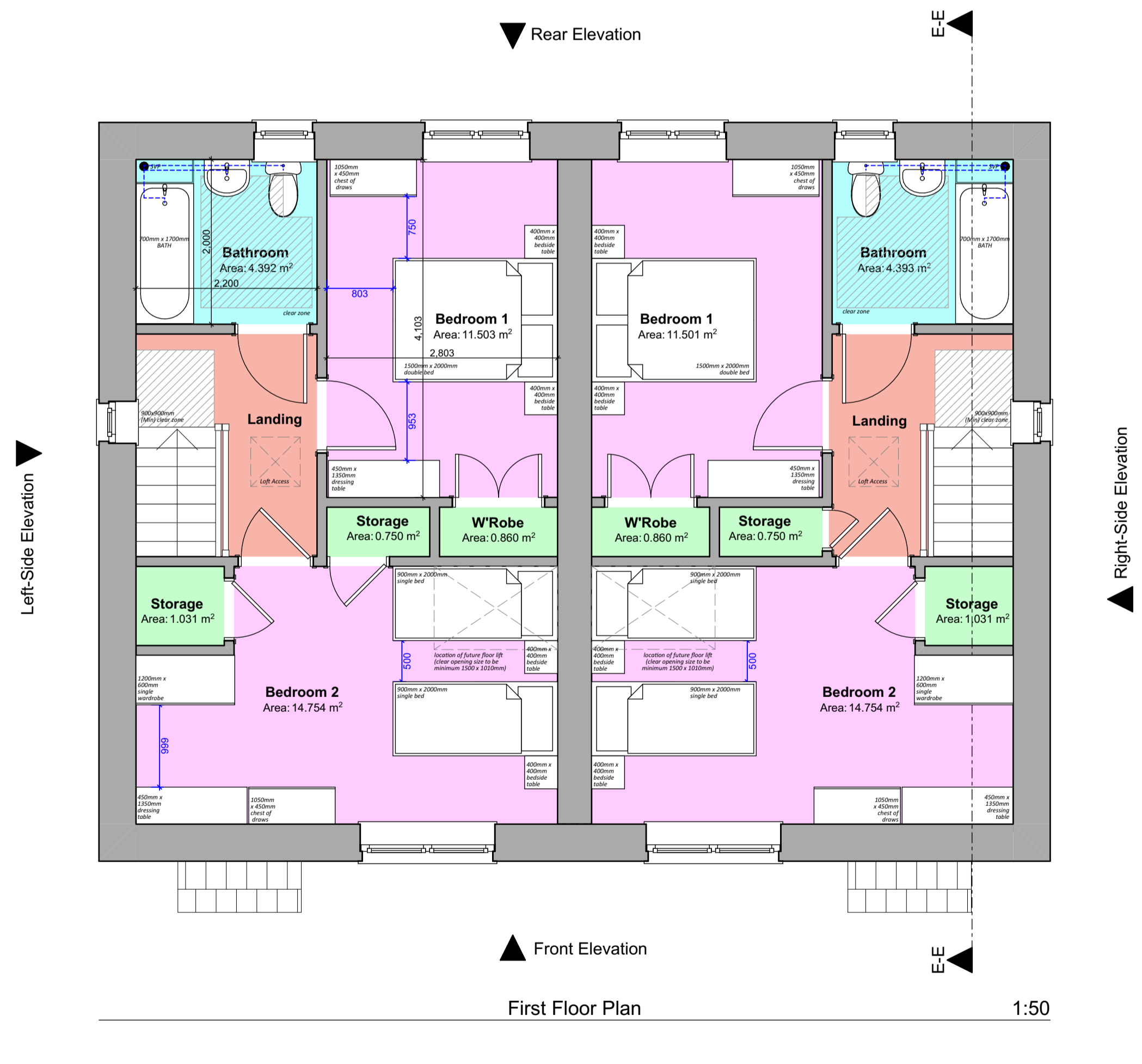
Proposed Residential Development at Former Cleddau Bridge Hotel, Pembroke Dock, SA72 6HZ

"Planning Drawings" - 4P2B Semi-Detached House Plots 3-6, 11-12, 22-23



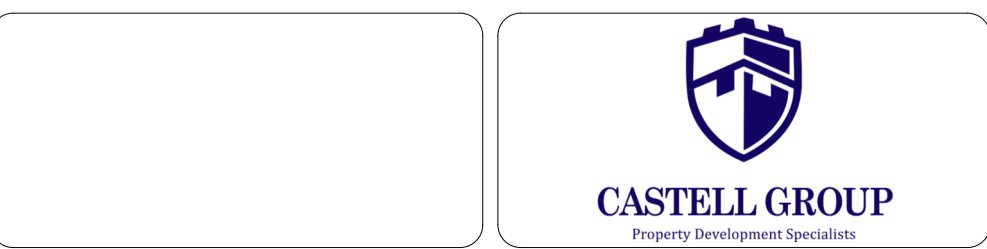
Floor Area: 4P2B
 Total Gross Internal Ground Floor Area = 41.571m² (447.467sqft)
 Total Gross Internal First Floor Area = 41.350m² (445.088sqft)
 Total Gross Internal Area = 82.921m² (892.554sqft)

Storage Areas: 4P2B
 (Storage areas highlighted in light green colour, excluding areas provided for Cylinder and Services)
[Required Storage Space = 2.5m²]
 Ground Floor Storage Area = 0.81m²
 First Floor Storage Area = 2.50m²
 Total dwelling Storage Area = 3.3m²



Revision:	Date:	By:	Notes:

Notes:
 1. To be read in conjunction with 'proposed house type external finishes site plan' dwg. no. R594 P-07 for individual plot finishes.
 2. To be read in conjunction with 'proposed house type external finishes drawing' dwg. no. R594 P-08.



Client: Castell Group
 Scale: Noted
 Date: Aug 2024
 Drawn: KP/RH

Job Title: Proposed Residential Development at Former Cleddau Bridge Hotel, Pembroke Dock, SA72 6HZ

Drawing Title: PLANNING DRAWINGS - 4P2B Semi-Detached House (Plots 3-6, 11-12, 22-23) - Plans, Section, Elevations

R594 P-13