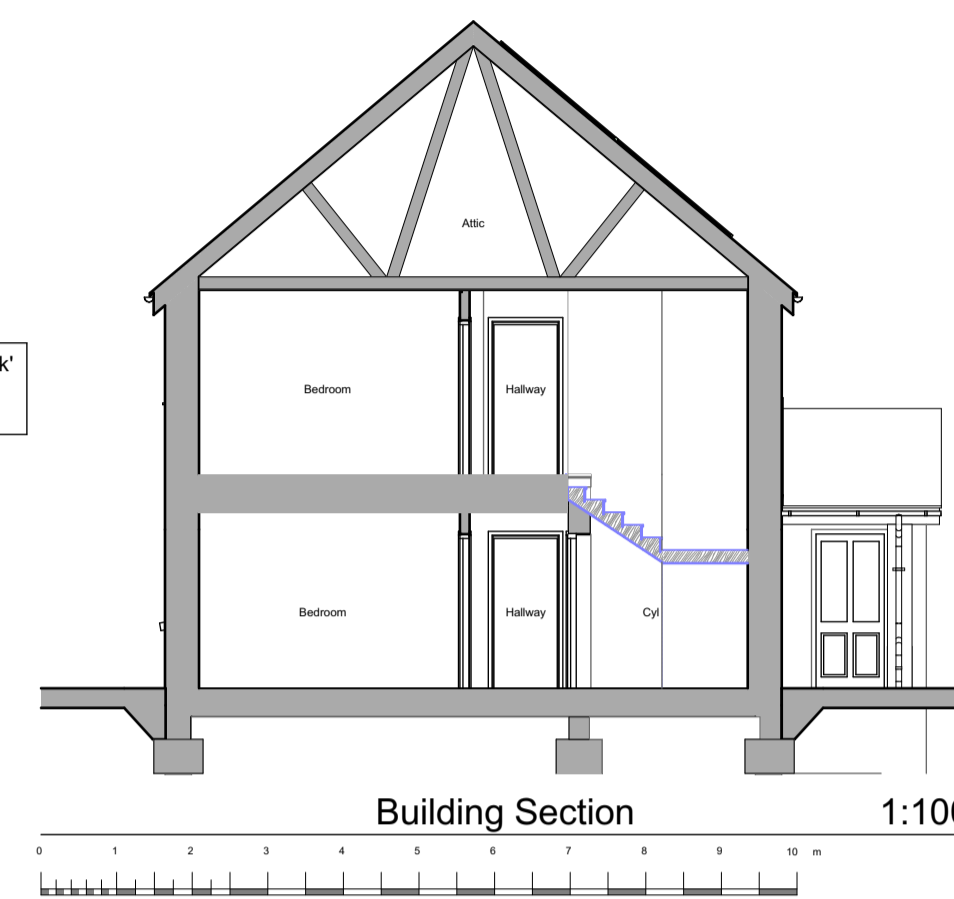


Proposed Residential Development at Former Cleddau Bridge Hotel, Pembroke Dock, SA72 6HZ

"Planning Drawings" - 2P1B Gable Entrance Flats Plots 18-21



Floor Area: 2P1B

Unit LHD:
 Total Gross Internal Ground Floor Area = 57.007m² (613.618sqft)
 Total Gross Internal First Floor Area = 53.903m² (580.207sqft)
 Average Gross Internal Area = 55.455m² (596.913sqft)

Unit RHD:
 Total Gross Internal Ground Floor Area = 56.947m² (612.972sqft)
 Total Gross Internal First Floor Area = 53.823m² (579.346sqft)
 Average Gross Internal Area = 55.385m² (596.159sqft)

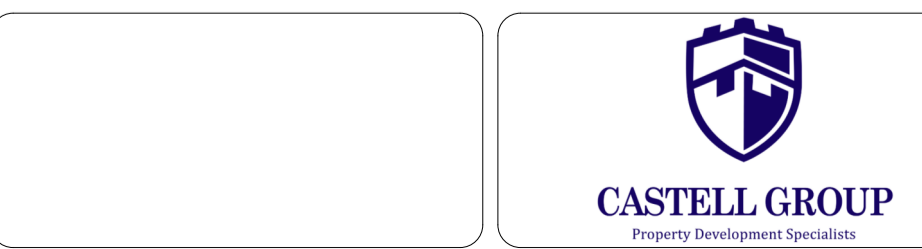
Storage Areas: 2P1B
 (Storage areas highlighted in light green colour, excluding areas provided for Cylinder and Services)

[Required Storage Space = 3.0m²]
 Ground Floor Storage Area = 1.5m²
 First Floor Storage Area = 1.5m²
 Total dwelling Storage Area = 3.0m²



Revision:	Date:	By:	Notes:

Notes:
 1. To be read in conjunction with 'proposed house type external finishes site plan' dwg. no. R594 P-07 for individual plot finishes.
 2. To be read in conjunction with 'proposed house type external finishes drawing' dwg. no. R594 P-08.



Client: Castell Group	Scale: Noted Date: Aug '24 Drawn: KP/RH	Drawing Title: PLANNING DRAWINGS - 2P1B Gable Entrance Flats (Plots 18-21) - Plans, Section and Elevations
Job Title: Proposed Residential Development at Former Cleddau Bridge Hotel, Pembroke Dock, SA72 6HZ	R594 P-12	