

Proposed Residential Development at Former Cleddau Bridge Hotel, Pembroke Dock, SA72 6HZ

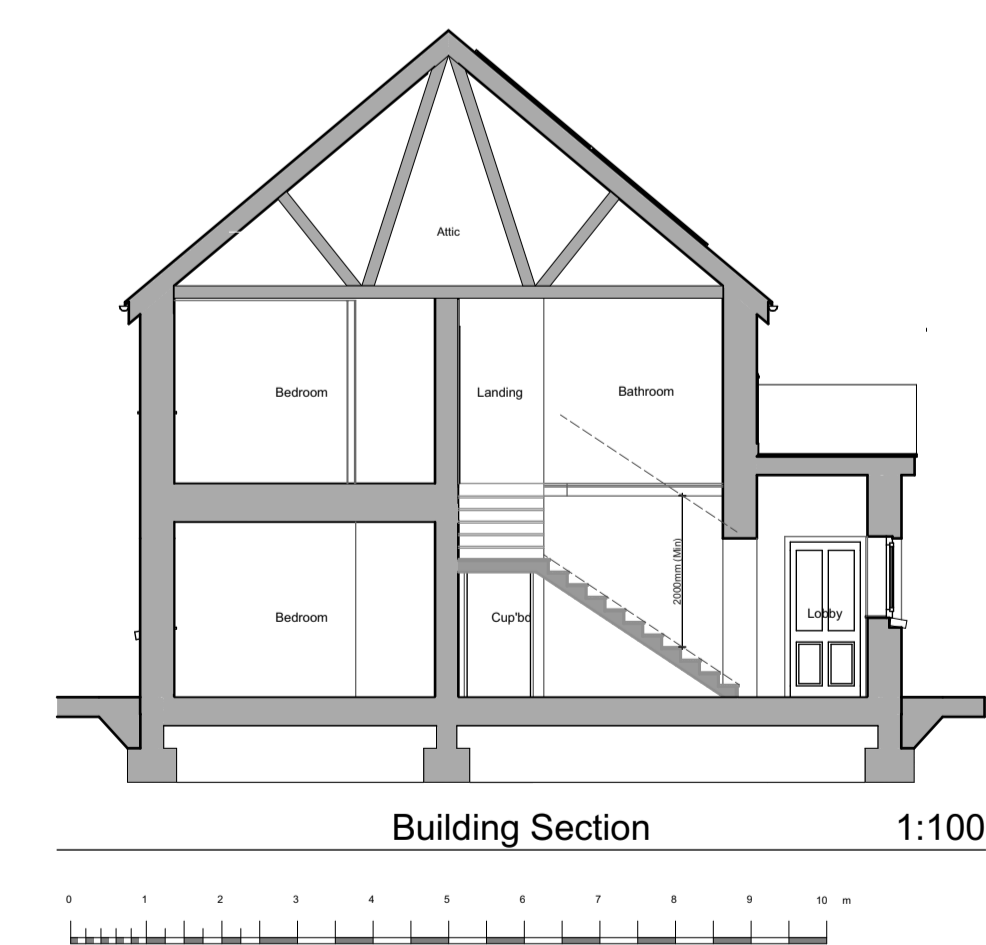
"Planning Drawings" - 2P1B Semi-detached Walk-up Flats Plots 7-10, 24-27



Front Elevation
First Floor Plan 1:50



Front Elevation
Ground Floor Plan 1:50



Floor Areas: Plots

Total Gross Internal Ground Floor Areas	= 50.785m ² (546.64sqft)
Total Gross Internal First Floor Areas	= 57.331m ² (617.11sqft)
Total Gross Average Floor Area	= 54.058m ² (581.87sqft)

Storage Areas:
(Storage areas highlighted in light green colour, excluding areas provided for Cylinder and Services)

[Ground Floor Flat - Required Storage Space = 1.5m ²]
Ground Floor Storage Area = 1.54m ²
[First Floor Flat - Required Storage Space = 1.5m ²]
First Floor Storage Area = 1.54m ²

Revision:	Date:	By:	Notes:
			1. To be read in conjunction with 'proposed house type external finishes site plan' dwg. no. R594 P-07 for individual plot finishes. 2. To be read in conjunction with 'proposed house type external finishes drawing' dwg. no. R594 P-08.

01348 433004
design@rlharchitectural.com
www.rlharchitectural.com

Property Development Specialists

Client:
Castell Group

Scale: Noted
Date: Aug '24
Drawn: KP/RH

Job Title:
Proposed Residential Development at Former Cleddau Bridge Hotel, Pembroke Dock, SA72 6HZ

Drawing Title:
PLANNING DRAWINGS -
2P1B Semi-detached Walk-up Flats
Plots 7-10, 24-27 - Plans, Section
and Elevations

R594 P-11