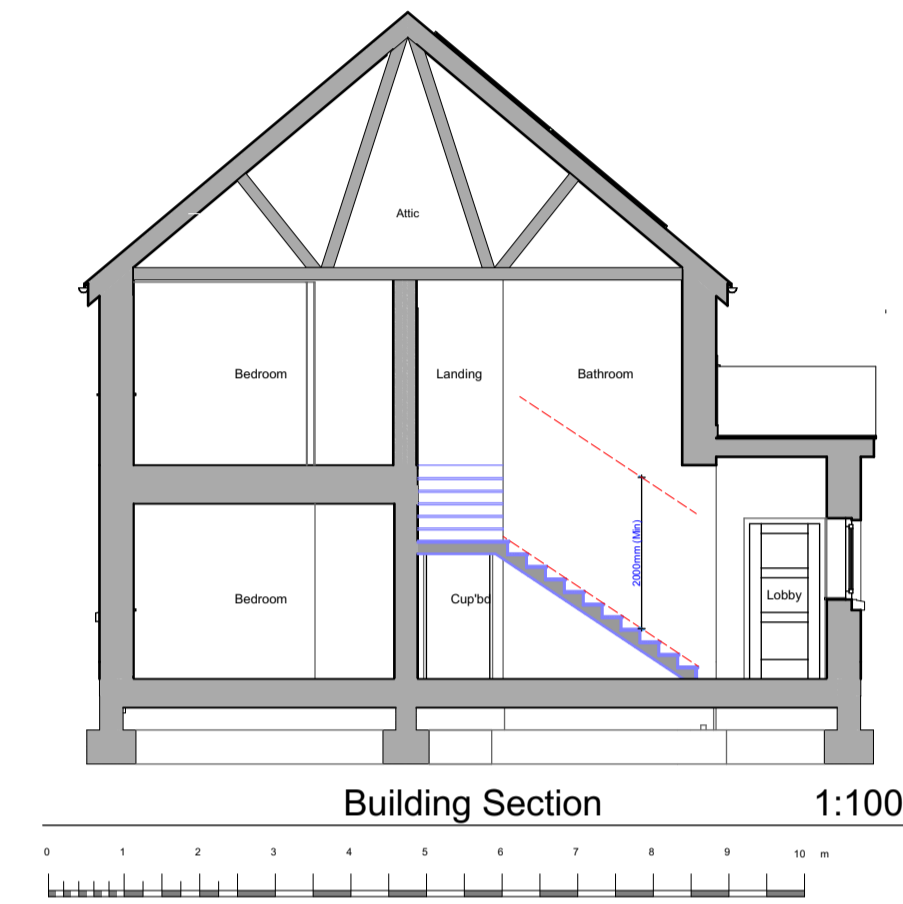
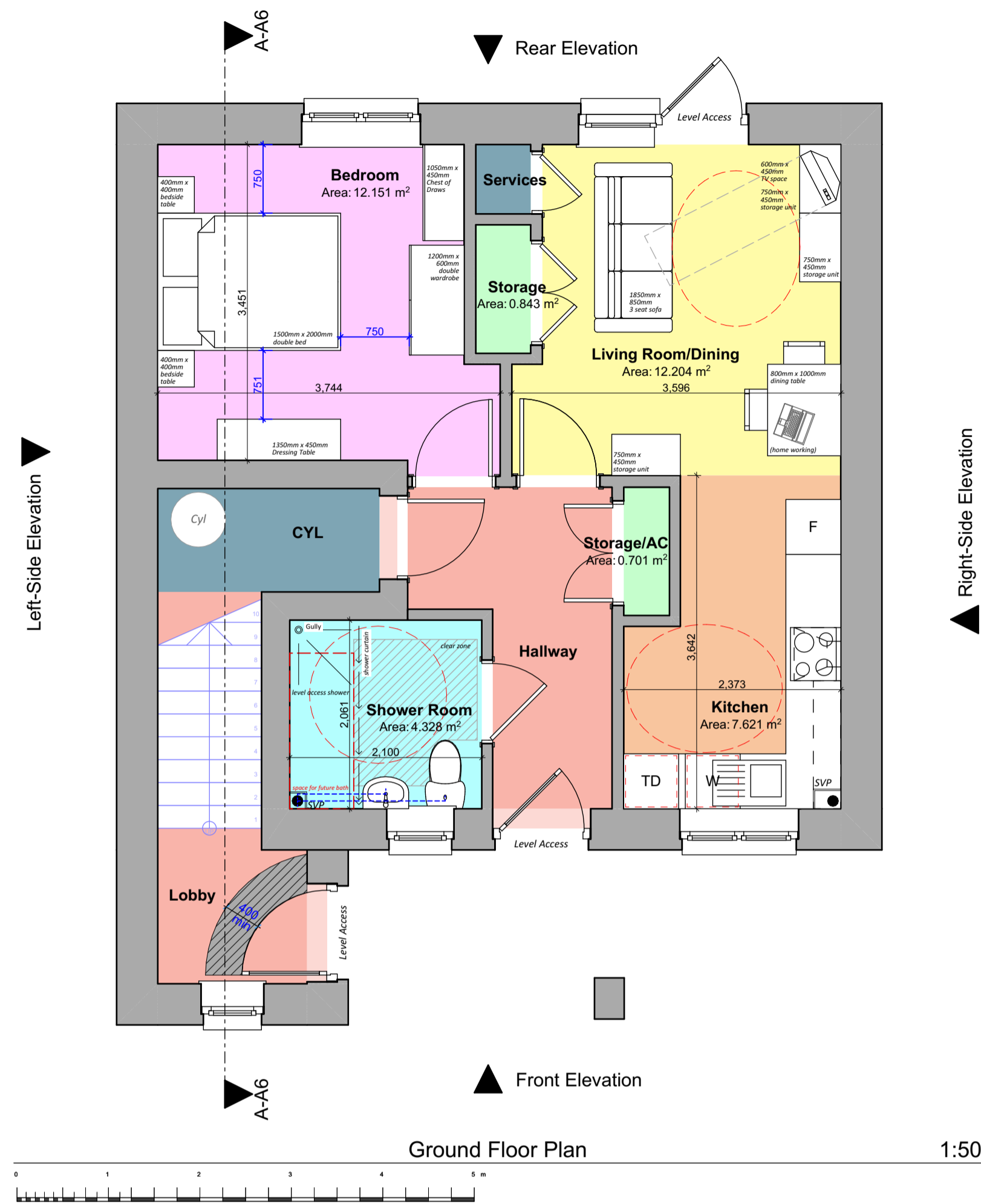


# Proposed Residential Development at Former Cleddau Bridge Hotel, Pembroke Dock, SA72 6HZ

## "Planning Drawings" - 2P1B Detached Flats Plots 34-35 as drawn, 32-33 handed



**Floor Areas: Plots**

Total Gross Internal Ground Floor Areas = 50.785m <sup>2</sup> (546.64sqft)
Total Gross Internal First Floor Areas = 57.331m <sup>2</sup> (617.11sqft)
Total Gross Average Floor Area = 54.058m <sup>2</sup> (581.87sqft)

**Storage Areas:**  
(Storage areas highlighted in light green colour, excluding areas provided for Cylinder and Services)

<b>[Ground Floor Flat - Required Storage Space = 1.5m<sup>2</sup>]</b> Ground Floor Storage Area = 1.54m <sup>2</sup>
<b>[First Floor Flat - Required Storage Space = 1.5m<sup>2</sup>]</b> First Floor Storage Area = 1.54m <sup>2</sup>



'Down to Dusk' Light fitting (above door)



'Down to Dusk' Light fitting (above door)



'Down to Dusk' Light fitting (above door)



Revision:	Date:	By:

**Notes:**  
 1. To be read in conjunction with 'proposed house type external finishes site plan' dwg. no. R594 P-07 for individual plot finishes.  
 2. To be read in conjunction with 'proposed house type external finishes drawing' dwg. no. R594 P-08.



Client: Castell Group  
 Scale: Noted  
 Date: Aug '24  
 Drawn: KP/RH  
 Job Title: Proposed Residential Development at Former Cleddau Bridge Hotel, Pembroke Dock, SA72 6HZ

Drawing Title: PLANNING DRAWINGS - 2P1B Detached Flats (Plots 32-35) - Plans, Section and Elevations  
**R594 P-10**