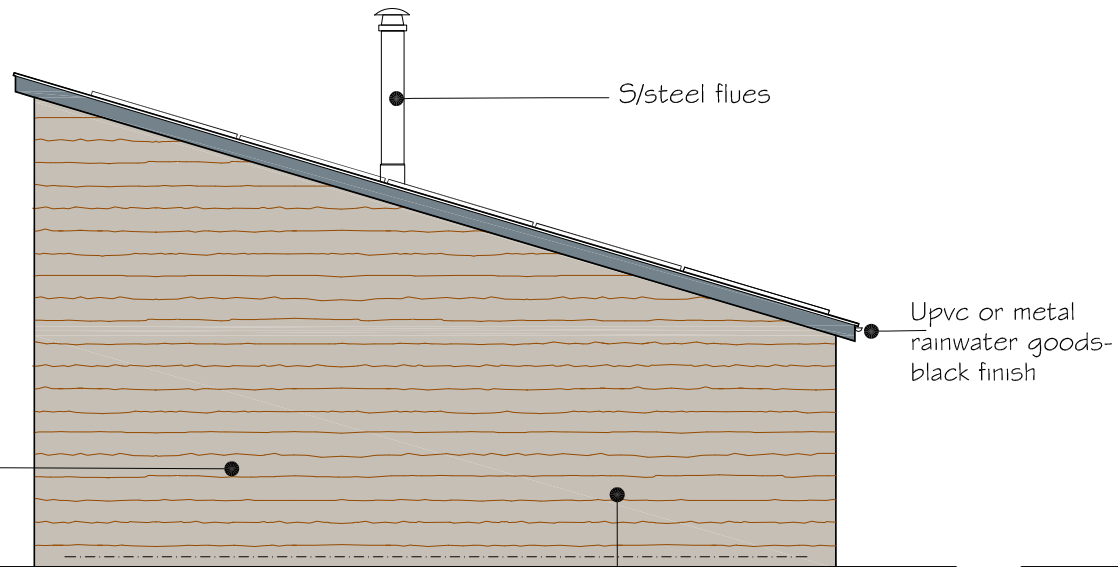


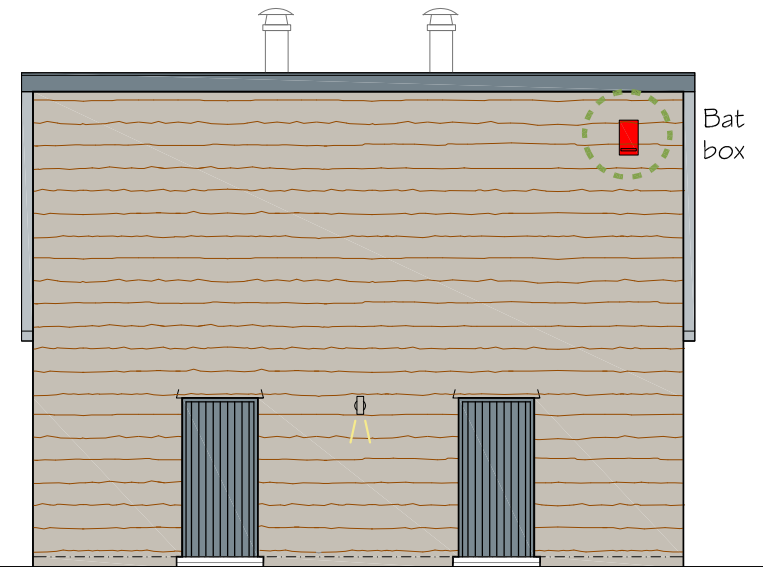
SOUTH WEST ELEVATION -

- Solar PV panel array to south facing elevation
- Corrugated metal sheet roofing. Colour green or drak grey
- Colour coated metal fascias/barges
- Timber clad external walls - Natural weathered finish



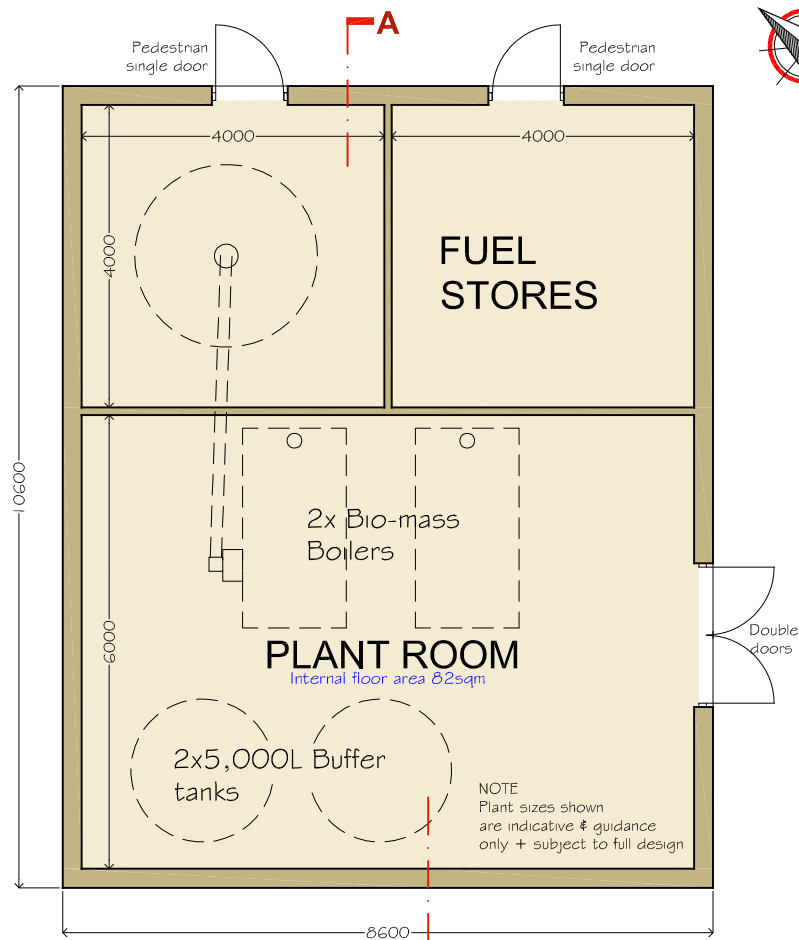
NORTH WEST ELEVATION -

- S/steel flues
- Upvc or metal rainwater goods - black finish
- Timber painted or composite doors

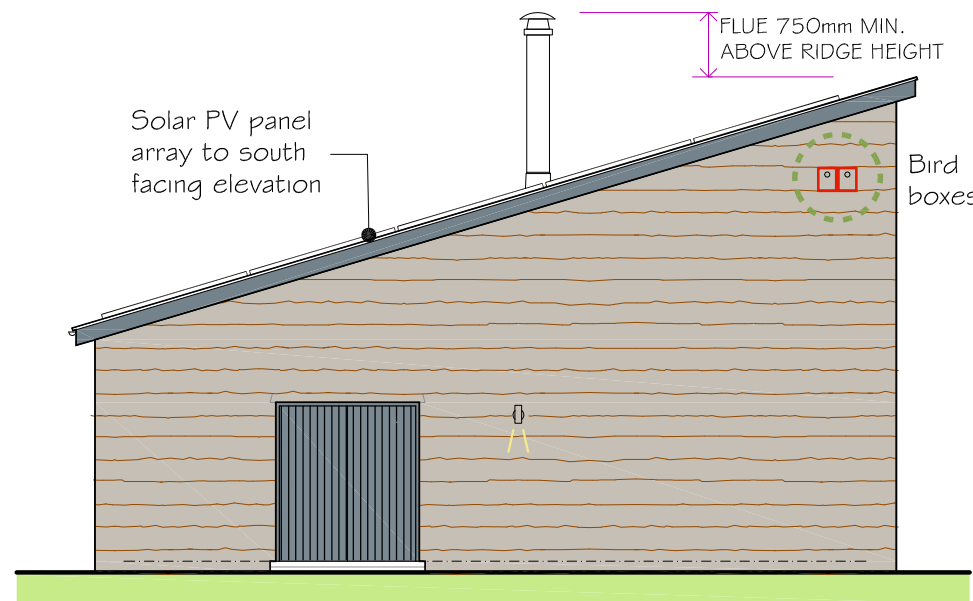


NORTH EAST ELEVATION -

Bat box

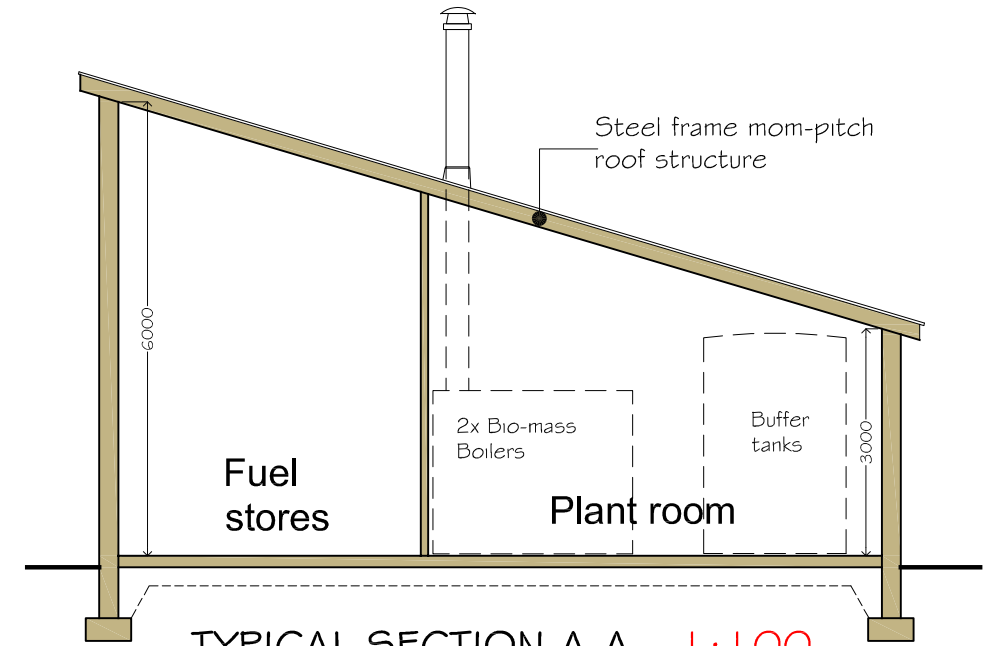


FLOOR LAYOUT - 1:100



SOUTH EAST ELEVATION -

- Solar PV panel array to south facing elevation
- FLUE 750mm MIN. ABOVE RIDGE HEIGHT
- Bird boxes



TYPICAL SECTION A-A - 1:100

EXTERIOR LIGHTING -

- Exterior LED Wall Downlighters or similar approved
- 2m max. height location
- Wired motion sensitive/short duration passive infra-red trigger mech.
- Fittings must include cover/hood to retain angle of light spillage less than 70°
- Wattage must be below (60w std. bulb or low energy / LED equiv.)

LIGHTING EXAMPLES



Bio-diversity enhancements

- In-wall bat box or 'Schweglar 1 FR' bat tube
- 'Schweglar Bird boxes in multiples

New Landscaped areas, providing foraging opportunities for wildlife

Revision	Description	Date
Drawing		
BIO-MASS BOILER BUILDING		
Client		
Mr. N. Neumann		
Project / Title		
Redevelopment of former Rochgate Motel site, plus new tourism development at Roch, Haverfordwest, Pembrokeshire.		
Dwg No.	Job No.	Paper
G16	1925	A3
Rev.	Drawn	Scale
	PNW	1:100
		Date
		AUG 2023

Hayston
Developments
& Planning Ltd

The Planning Studio, Hayston Bridge
Johnston, Haverfordwest
Pembrokeshire SA62 3HJ
01437 891 817
07515 851 704
andrew@haystonplanning.co.uk
www.planningpembrokeshire.co.uk



BIO-MASS BOILER BUILDING

