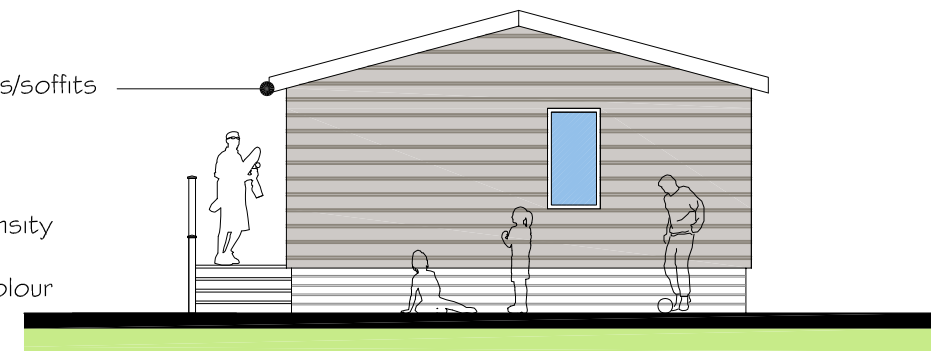


FRONT ELEVATION - 1:100

- Grey upvc fascias/soffits
- Upvc windows - Anthracite grey
- Canexel High-density composite wood cladding-Grey colour

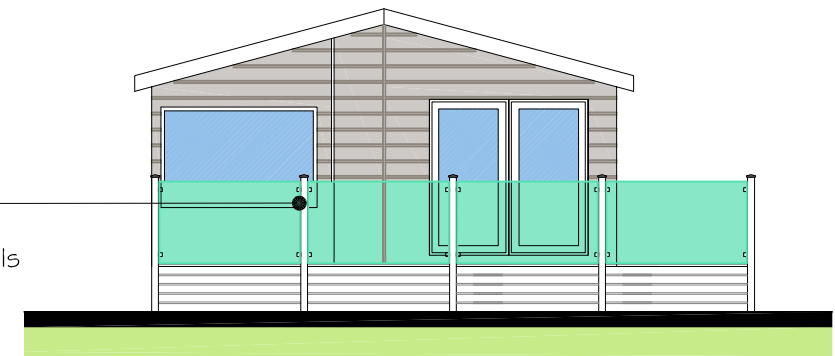


SIDE ELEVATION - 1:100

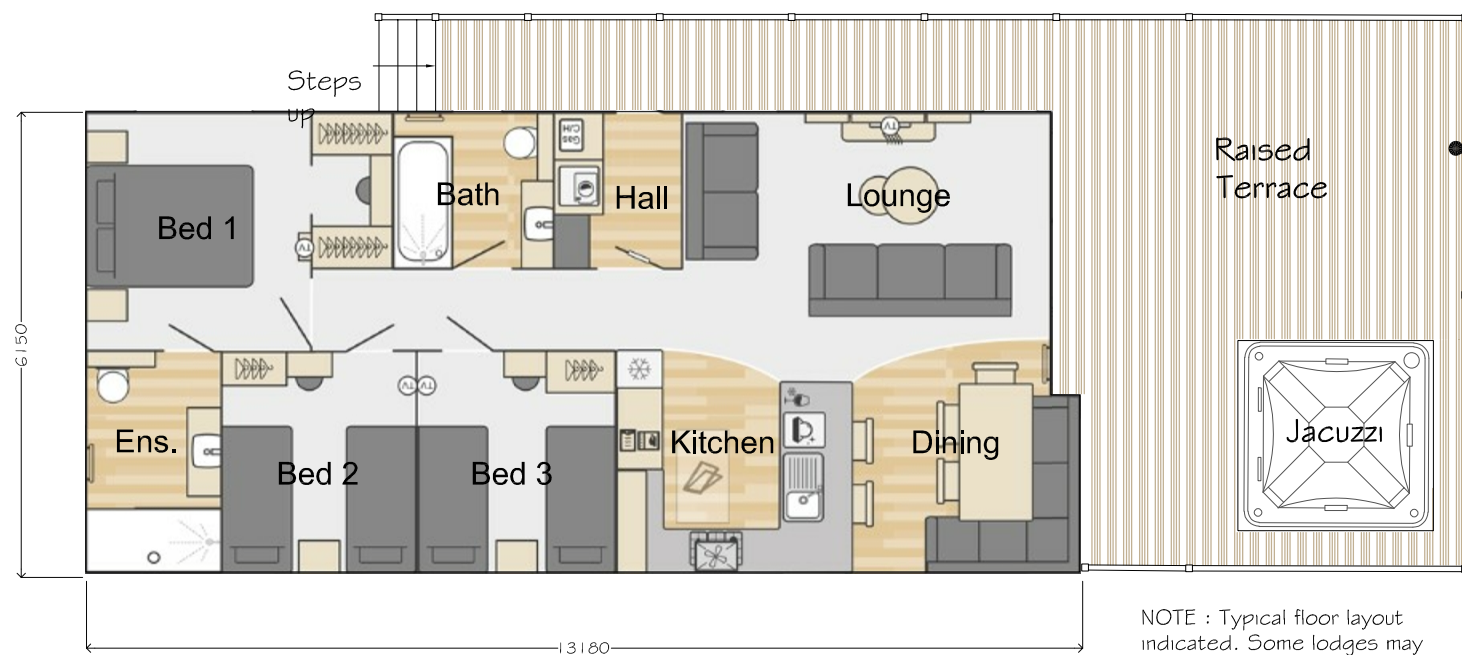


REAR ELEVATION - 1:100

- Roof tiles - Charcoal grey
- Structural glass guarding to front face of terrace
- Timber painted guarding/rails
- Horizontal timber infill paneling to perimeter base of lodges



SIDE ELEVATION - 1:100



FLOOR LAYOUT - 1:100

NOTE : Typical floor layout indicated. Some lodges may be handed, subject to location on site

- Composite boarded non-slip decking finish
- Structural glass guarding to front face of terrace

TYPE B LODGE DETAILS




LODGE TYPE - SWIFT TORONTO 3 BED UNITS 12-No.15

APPROX. INTERNAL FLOOR AREA = 75sqm



| Revision | Description | Date |
|---|-------------------------|---|
| Drawing LODGE DETAILS | | |
| Client Mr. N. Neumann | | |
| Project / Title Redevelopment of former Rochgate Motel site, plus new tourism development at Roch, Haverfordwest, Pembrokeshire. | | |
| Dwg No. G14 | Job No. 1925 Rev. | Paper A3 Drawn PNW Scale 1:100 Date AUG 2023 |



Hayston
Developments
& Planning Ltd

The Planning Studio, Hayston Bridge
Johnston, Haverfordwest
Pembrokeshire SA62 3HJ
01437 891 817
07515 851 704
andrew@haystonplanning.co.uk
www.planningpembrokeshire.co.uk