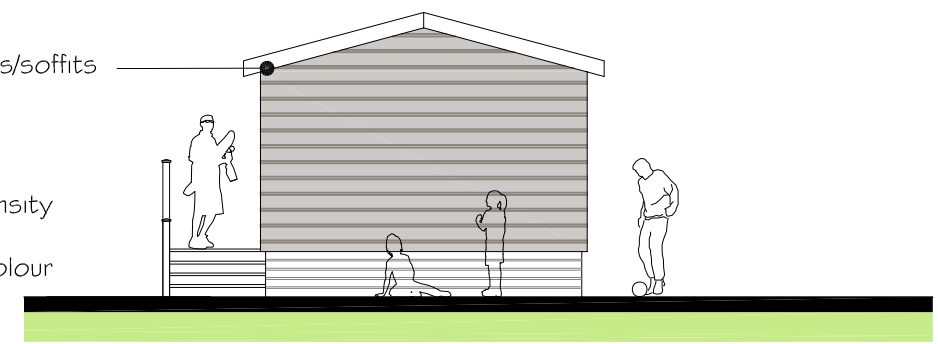


FRONT ELEVATION - 1:100

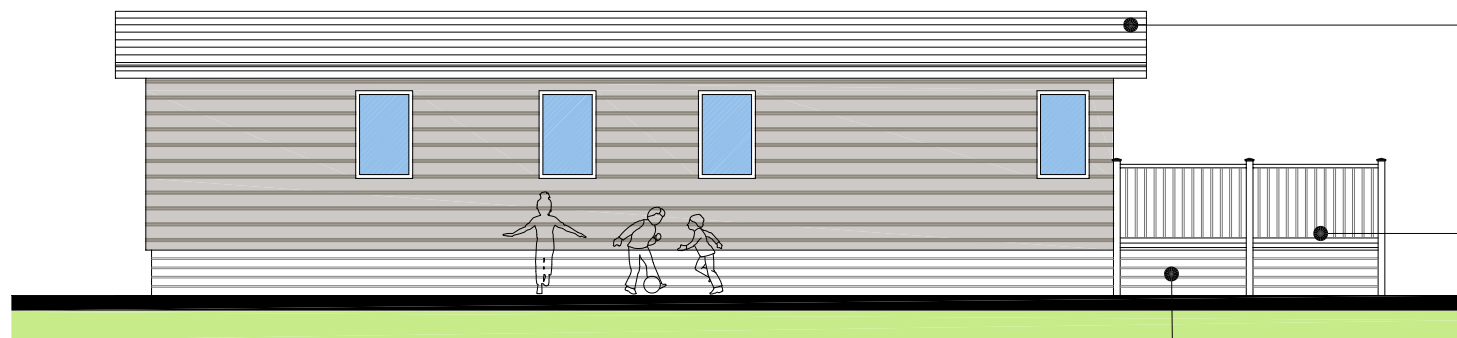


SIDE ELEVATION - 1:100

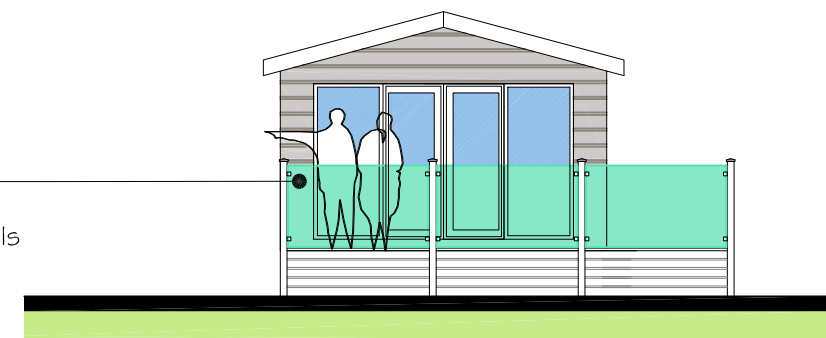
Grey upvc fascias/soffits

Upvc windows - Anthracite grey

Canaxel High-density composite wood cladding-Grey colour



REAR ELEVATION - 1:100



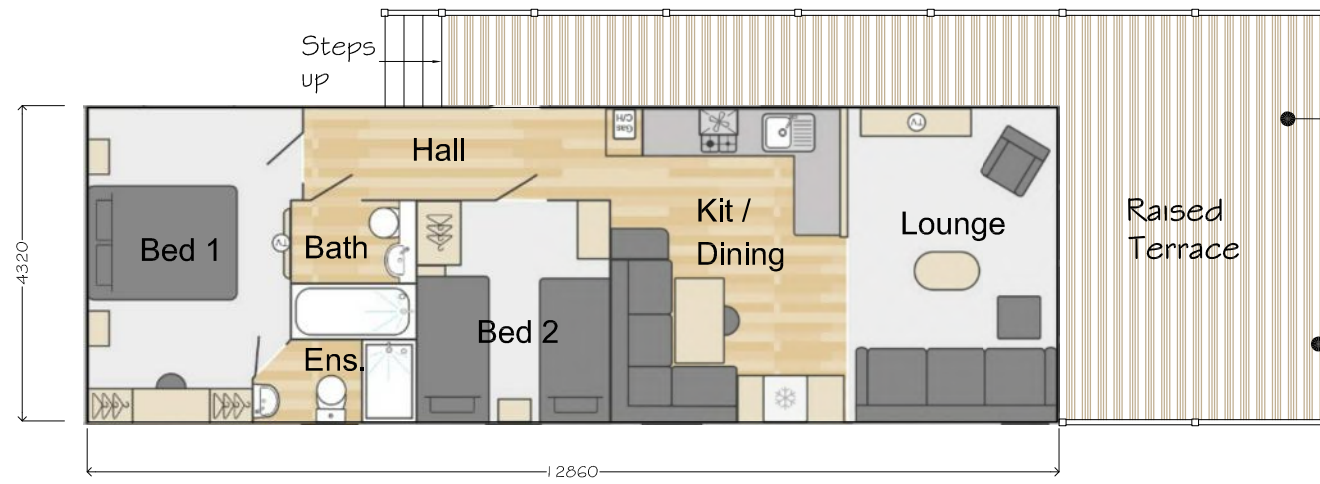
SIDE ELEVATION - 1:100

Roof tiles - Charcoal grey

Structural glass guarding to front face of terrace

Timber painted guarding/rails

Horizontal timber infill paneling to perimeter base of lodges



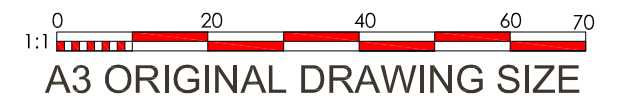
FLOOR LAYOUT - 1:100

Composite boarded non-slip decking finish

Structural glass guarding to front face of terrace

NOTE : Typical floor layout indicated. Some lodges may be handed, subject to location on site

# TYPE A LODGE DETAILS



Revision	Description	Date
Drawing <b>LODGE DETAILS</b>		
Client <b>Mr. N. Neumann</b>		
Project / Title Redevelopment of former Rochgate Motel site, plus new tourism development at Roch, Haverfordwest, Pembrokeshire.		
Dwg No. <b>G13</b>	Job No. 1925 Rev.	Paper A3 Drawn PNW
Scale 1:100	Date AUG 2023	

**Hayston**  
Developments  
& Planning Ltd

The Planning Studio, Hayston Bridge  
Johnston, Haverfordwest  
Pembrokeshire SA62 3HJ  
01437 891 817  
07515 851 704  
andrew@haystonplanning.co.uk  
www.planningpembrokeshire.co.uk



LODGE TYPE - SWIFT MOSELLE 2 BED UNITS 1 - 6 & 21-25

APPROX. INTERNAL FLOOR AREA = 50sqm