



Proposed south west Elevation - 1:100

Natural random stonework entrance projections, with slate copping detailing.



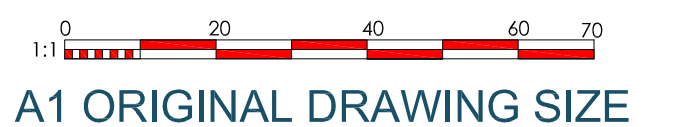
Proposed North west Elevation - 1:100



Proposed North East Elevation - 1:100

Arrow slit window detailing with cut stone banding.

Natural random stonework entrance projections, with slate copping detailing.



PROPOSED ELEVATIONS - 1:100

**EXTERIOR LIGHTING**

- Exterior LED Wall Downlighters or similar approved
  - 2m max. height location
  - Window motion sensor/short duration passive infra-red trigger mode.
  - If design must include coverhood to retain angle of light, spillage less than 70°
  - Wattage must be below 60w std. bulb or low energy / LED eqiv.)
- Exterior LED Sign light Down lighter with traditional arm or similar approved
  - Illuminated during opening hours only
  - Fittings must include coverhood to retain angle of light spillage less than 70°

**LIGHTING EXAMPLES**

**Ecology enhancement.**

- In-wall bat box or 'Schweglar' IFR bat tube
- 'Schweglar' Bird boxes in multiples

New Landscaped areas, providing foraging opportunities for wildlife.

Revision	Description	Date
<b>PROPOSED ELEVATIONS</b>		
Client:	Mr. N. Neumann	
Project Title:	Redevelopment of former Rochgate Motel site, plus new tourism development at Roch, Haverfordwest, Pembrokeshire.	
Drawn:	Job No.:	Scale:
Rev.:	1925	1:100
	Drawn:	Date:
	PNW	JULY 2023

Hayston  
Developments  
& Planning Ltd

The Planning Studio, Haverfordwest  
Pembrokeshire SA42 3HU  
01342 891817  
01342 891704  
info@haystondevelopments.co.uk  
www.planning@haystondevelopments.co.uk