

ADJACENT FIELD  
(In same ownership)

SEE DRAWING NO. G05 for  
Main Site area

ADJACENT FIELD  
(In same ownership)

ADJACENT FIELD  
(In same ownership)

ADJACENT FIELD  
(In same ownership)

ADJACENT FIELD  
(In same ownership)

# LANDSCAPING

**LANDSCAPING KEY**

- Road & pedestrian areas paved with permeable bricks or block pavers
- Parking areas - Tarmac or paving surfaces
- Tarmac road / parking areas to Highways requirements standards
- Gravel or hardcore permeable finish
- Grassed areas across Development.
- 1.0m / 1.2m ht. close boarded timber fences / gates
- Block rendered walls - Slate or curved cement cappings
- Various native shrubs & ornamental plant species
- Division plant screening - native shrubs plant species
- New Earth bank hedging with native plant species landscaping
- Landscape screening / Buffer zone with native plant species landscaping + Wildlife & ecology enhancements
- Suggested locations for new Light standard trees

NOTE - All existing hedges supplemented with additional native shrubs/plants to increase density where necessary.

**LANDSCAPING SCHEDULE**

Use of native species preferred to standard B.S.3936.

**TIME OF PLANTING:**  
Planting will take place using the following recommendations as a guide. Severe weather in these periods will be avoided.

- Deciduous shrubs & trees: Late October to Late March
- Conifers and evergreens: Sept / Oct or Apr/May
- Container grown plants: At any time if ground and weather conditions are favourable
- Dried bulbs, corms and tubers: Sept/Oct.
- Cacti/cus: Jan/Aug
- Green bulbs: After flowering in spring.

Plants will be stored and handled to prevent damage before planting.

**Bare root plants:**

- Make a slit / notch in the soil with a spade deep enough to accommodate the roots.
- Slide the roots down the back of the spade as it is withdrawn from the hole.
- Gently lift plant to position original soil mark with the soil.
- Firm gently with the heel of boot.

**Back pot shrubs:**

- Dig hole for each plant approximately twice the diameter of the root system and as the same depth.
- Tap pot off plant and sever any circling roots with a sharp knife.
- Check height of soil of plant and surrounding soil are equal.
- Back fill in layers with excavated soil firming against root system with hands.
- Add more soil if required to obtain correct level & leave a friable surface.
- Water in

**GRASS SEED -** Species rich Grass Mix KSK1 or equivalent, 50g/m<sup>2</sup> to all grass areas.

All planting to be carried out during dormant season between the months October to March.

**TREES:**  
Suggested tree locations indicated on plan, with an assorted species mix chosen from below list, subject to location. To include the following Native species, but not exclusive to these species only. Container grown

<i>Sambucus nigra</i>	<i>Tilia tomentosa</i>	<i>Quercus petraea</i>
<i>Prunus spinosa</i>	<i>Tilia cordata</i>	<i>Betula pubescens</i>
<i>Betula pendula</i>	<i>Quercus robur</i>	<i>Alnus glutinosa</i>
<i>Corylus avellana</i>	<i>Crataegus monogyna</i>	
<i>Ilex aquifolium</i> - (Container grown)		

**Trees:**  
Excavate hole to allow space around the root system. Tree pits for standards to be excavated to leave 500mm around circumference of root ball.  
Diggle sides of hole with a fork and break up bottom to a depth of 150mm. Ensure tree sits at the correct depth and penetrate tree for best effect.  
Cut any circling roots with a sharp knife. Backfill in 100mm layers firming soil with heel of boot at each stage.  
Knock in stakes and attach rubber lining. Add more soil if required to obtain correct level and leave a friable surface.  
Water in.

**Stakes:** Standard trees staked with 1 x softwood stake (100mm x 1.2m), driven in at 45 degrees on the windward side, secured to tree at 1/3 height using hessian hodgegradable tree tie.  
**Mulching:** Trees to be mulched with a composted woodchip to a depth of 75mm.

**Maintenance:**  
For a period of 10 years from planting, any tree failures or tree losses are to be replaced to maintain a minimum stocking density as stated.  
During the same period any fences and drainage channels are to be properly maintained in accordance with the rules and practice of good forestry.  
Trees must be protected against damage and be adequately watered at regular intervals.

**Landscaping throughout Development to include native non-thorny + thorny + Fruiting & non-fruiting species (limited thorny species to develop hedge planting and non-thorny near adjacent public access common used areas) - to provide habitat and food for wildlife. There will be bare root plants and planted in a single / double rows where applicable at a density of five plants per linear meter. Supplementing planting to be planted at a density of three plants per square meter in groups of three to five.**

Species/No thorny	Type	Qty
<i>Cornus amomum</i>	BR	4000 10%
<i>Sambucus nigra</i>	BR	4000 2%
<i>Lonchocarpus</i>	BR	4000 1%
<i>Cornus sanguinea</i>	BR	4000 3%
<i>Viburnum spicatum</i>	BR	4000 1%
Thorny species	Type	Qty
<i>Prunus spinosa</i>	BR	4000 10%
<i>Crataegus monogyna</i>	BR	4000 25%
<i>Sambucus nigra</i>	BR	4000 15%
<i>Ilex aquifolium</i>	Pot	30 5%

**GROUND COVER PLANTING -** Suggested species mix - Taller species planted to areas adjacent fences & walls, subject to facing aspect.

<i>Egigenia Revinckiana</i> (Mexican daisy)	<i>Lonicera pilata</i>
<i>Salvia nemorosa</i> (Rosemary)	<i>Viburnum dentatum</i>
<i>Geranium 'nanus'</i>	<i>Cotoneaster monoglypha</i>
<i>Platanus fruticosa</i> 'red ace'	<i>Symphoricarpos x chevallii</i> 'harrook'
<i>Geranium 'pink lady'</i>	
<i>Convolvulus sabotus</i> (blue rock lavender)	
<i>Deloselinum roseum</i>	
<i>Carex comans</i> (beard grass)	
<i>Chamaemelum nobile</i> (Dwarf fennel)	

**CREATION OF NEW BUFFER ZONE**

Proposal indicated is to provide an additional clear separation and protection for the existing water course running adjacent along part of the southeast boundary.

There is currently already a natural plant & grassy overgrowth spanning the length of boundary. This is to be reinforced with the addition of the buffer zone.

**BUFFER ZONE**  
5-10m wide dense planted area, creating a natural barrier, with the use of native plant species. For screening and softening of Development, plus enhancement benefits for Wildlife (See suggested planting below)

**FUTURE MANAGEMENT / MAINTENANCE**  
Annual visual inspections to be carried out each year by Owner / Landscaper. Any dead/dying or un-established planting to be removed and replaced with new, maintaining the full overall buffer depth.

**TEMPORARY PROTECTION**  
Provide in place. Temporary post & rail or post and rail fencing at 500mm max. height along outer edge of buffer zone to exclude camp site users entering area and damage of planting.  
Once buffer zone has been established, fencing may be removed. Suggested min. 2yrs allowance for growth establishment.

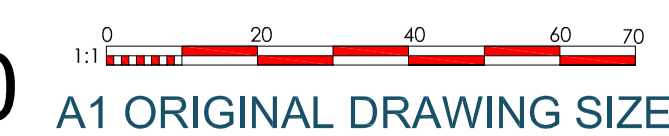
**PLANTS TO NEW BUFFER ZONE**  
Temperamental species chosen, maintaining a large percentage of fruiting plant species for added benefit for wildlife

<i>Crataegus monogyna</i> (hawthorn)	60-80% BR (20%)
<i>Cornus amomum</i> (Pheasant)	60-80% BR (20%)
<i>Cornus sanguinea</i>	60-80% BR (20%)
<i>Viburnum spicatum</i> (Cecidary rose)	60-80% BR (20%)
<i>Prunus spinosa</i>	60-80% BR (10%)
<i>Sambucus nigra</i>	60-80% BR (10%)
<i>Rosa canina</i>	60-80% BR (5%)

Suggested route of site Surface water drainage, to SWALE attenuation pond - Size and location to be further agreed by SABS Designer/specialist.

Suggested location of new SWALE attenuation pond - Size and location to be further designed by SABS Designer / specialist.

SITE AREA (Outlined in Red) = 27,885sqm



## PROPOSED PART SITE LAYOUT - 1:500

Revision	Description	Date
Drawing: PROPOSED PART SITE LAYOUT		
Client: Mr. N. Neumann		
Project Title: Redevelopment of former Rochgate Motel site, plus new tourism development at Roch, Haverfordwest, Pembrokeshire.		
Drawn: G06	Drawn: PNV	Date: MARCH 2022

Scale: 1:500  
Page: A1  
Sheet: 1 of 1

Hayston Developments & Planning Ltd  
The Planning Studio, Haverfordwest, Pembrokeshire SA42 3HJ  
01307 891 811  
01311 851 706  
info@haystondevelopments.co.uk  
www.planninganddesign.co.uk