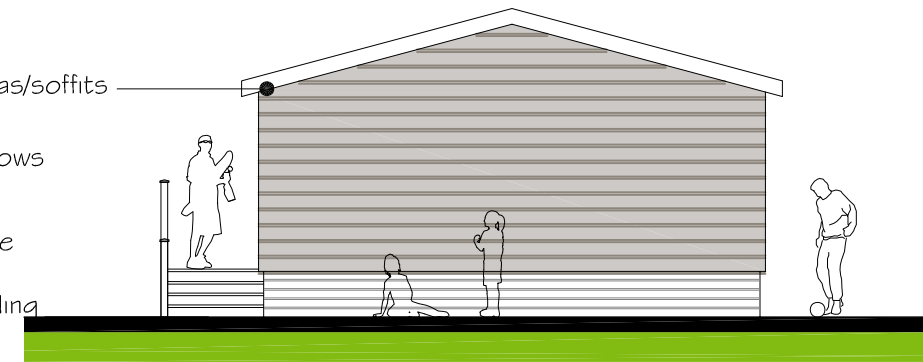




FRONT ELEVATION - 1:100

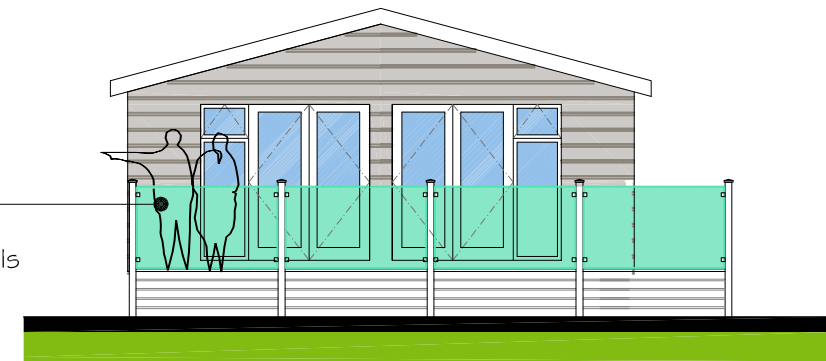


SIDE ELEVATION - 1:100

- White upvc fascias/soffits
- White upvc windows
- Canaxel Coastline Ced'R-Vue composite cladding



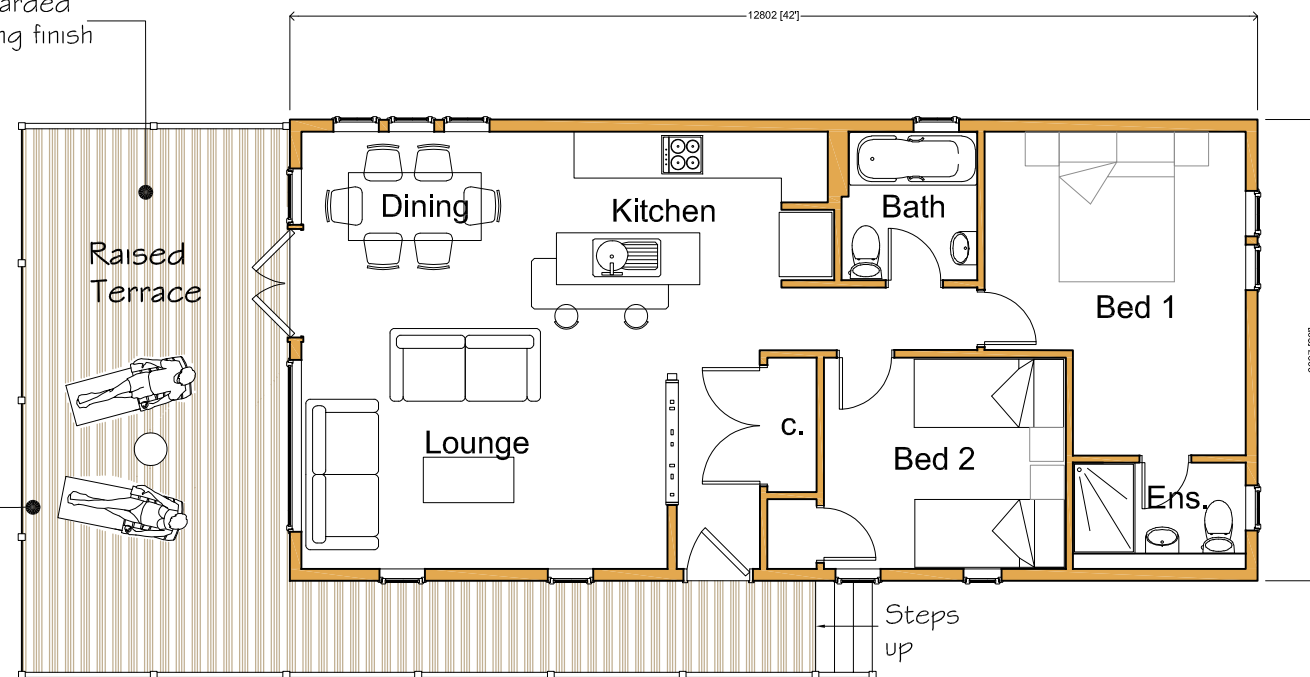
REAR ELEVATION - 1:100



SIDE ELEVATION - 1:100

- Roof tiles - Charcoal grey
- Structural glass guarding to front face of terrace
- Timber painted guarding/rails
- Horizontal timber infill paneling to perimeter base of lodges

Composite boarded non-slip decking finish



FLOOR LAYOUT - 1:100

NOTE : Typical floor layout indicated. Some lodges may be handed, subject to location on site

LODGE DETAILS - TYPE B



Revision	Description	Date
Drawing	LODGE DETAILS - TYPE B	
Client	Heatherton	
Project / Title	Phase 3 - Provision of a further 24 Lodges with ecological enhancement & provision of Managers / Security Dwelling with linked 'Meet & Greet' Office at Florence Springs, Heatherton World of Activities, St.Florence, Tenby, SA708RJ	
Dwg No.	Job No.	Paper
P05	1793	A3
Rev.	Drawn	Scale
	PNW	1:100
		Date
		NOV 2020

Hayston
Developments
& Planning Ltd

The Planning Studio, Hayston Bridge
Johnston, Haverfordwest
Pembrokeshire SA62 3HJ
01437 891 817
07515 851 704
andrew@haystonplanning.co.uk
www.planningpembrokeshire.co.uk

