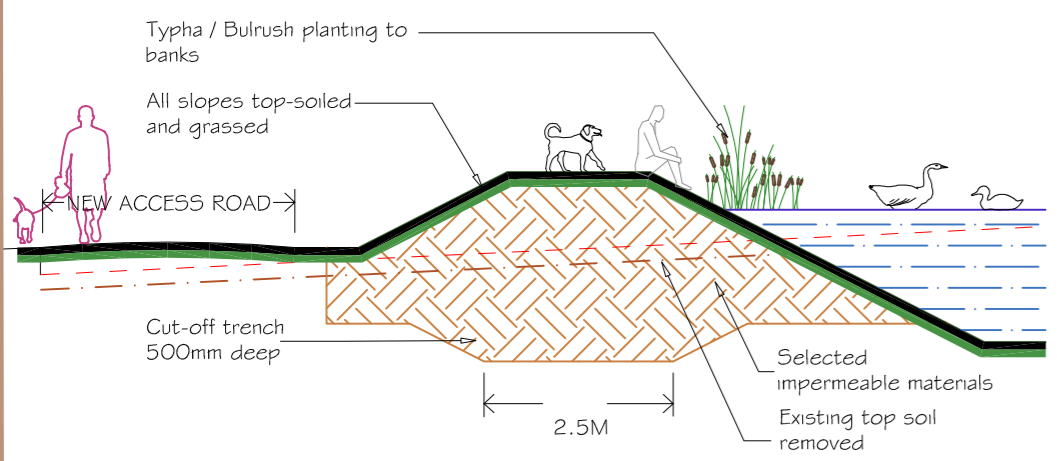




SECTION X-X THRU PART OF LAKE - 1:200



NOTES -

- 1- Area of earthworks to be cleared of all vegetation. Topsoil and unsuitable material are to be removed & set aside before the earthworks are commenced
- 2- All earthworks are to be carried out under dry conditions
- 3- The embankments are to be constructed using selected excavated material which when compacted at suitable moisture content will form an impermeable material.
- 4- The embankment is to be constructed in 150mm thick layers and each layer is to be compacted by 4 passes of a suitable vibratory roller.
- 5- The nature of the ground is to be initially assessed when exposed and monitored as excavations proceed to ensure that the finished conditions will be suitable for the retention of water.
- 6- Surplus materials are to be disposed of at suitable locations after the structural works have been completed

New areas of infill tree planting shown thus. (N.T.) Full details to Landscaping scheme
 Area of road within CEZ provisionally to be constructed with a 'no dig design' avoiding damage to any Tree root system - To be assessed on site

TYPICAL SECTION OF EMBANKMENT - 1:100

New site access roads shown thus. 5m width. Tarmac finish, with 300mm gravel drainage strips both sides.

Construction Exclusion Zone (CEZ) indicated hatched, Area where no construction activities are permitted and access is prevented by protective barriers

4no. existing Golf greens + tee off areas removed

Suggested provision of Bat & bird boxes along north boundary for Ecological enhancement

Existing zone of tree planting, to be removed, and re-planted elsewhere where feasible.

All lodges provided with min. 2 x car parking space - 2.4 x 4.8m min. per car. Gravel & hardcore permeable construction

Existing Tree planting to be pruned alongside Lodge position.

See Drawings PO4 + PO5 for Design Layouts/elevations of Proposed Lodges - Type A & B.
 Note- Lodge type locations to be varied, with multiples of same type in certain locations. To be agreed on site.

Ground levels where hatched to be raised & leveled with excavated materials from Lake.

DRAINAGE KEY

NEW FOUL GRAVITY DRAINS ROUTES PROV. SHOWN TO BE GRAVITY FALLS WHERE ACHIEVABLE. PUMP UNITS TO BE PROVIDED IF NEEDED. ALL LODGES TO BE CONNECTED INTO EXISTING SYSTEM WITHIN PREVIOUS PHASE, DISCHARGING TO EXISTING TREATMENT PLANT

SURFACE WATER FROM LODGES TO BE GENERALLY DISCHARGED INTO EXISTING PROPOSED LAKES. IF NOT ACHIEVABLE, IF NOT FEASIBLE DUE TO LOCATION, SWATER TO DISCHARGE TO SOAKAWAY PIT.

NOTE: service positions (Mains power supply / mains water / B.T. routes are subject to engineers / service provider design / details & W.W.A searches.

Ecology enhancement.

- In-wall bat box or 'Schweglar IFR' bat tube
- 'Schweglar' Bird boxes in multiples

New Landscaped areas, providing foraging opportunities for wildlife

See Ecological Report

NEW BOLLARD LIGHTING



New low-level External Lighting Bollards, PIR Sensitive and LED (Downward angle illumination) to match existing lights to previous Phase, or similar approved.

Existing stream / ditch alignment

Existing stream / ditch to be linked to new Lake for part diversion of stormwater. min. 1m wide with 27° batters

See Tree report for full details of Ash Die back removal to existing trees.

Grassed communal amenity area along south side of Lake. Existing levels raised where required, forming a provisional freeboard to lake of approx. 500mm

Proposed new Lake - Approx. shape indicated, subject to final design and site levels. Perimeter banks shaped where required at a max. gradient of 27° or less.

New embankment formed to lower levels of Lake

Overflow ditch formed at lower end of Lake, 1m width at base, with battered sides abd. 1.2m wide Timber walkway with handrails provided over

Re-form & surface part of existing access track

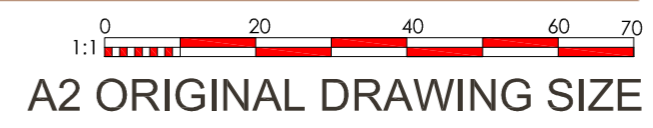
New Bollard lighting

Extent of site application

See Drawings POG - P10 for full details of New 'Meet & Greet' Office and Managers Dwelling.

1 no. tree to be removed.

PROPOSED SITE LAYOUT



Revision	Description	Date
Drawing: PROPOSED SITE LAYOUT		
Client: Heatherton		
Project / Title: Phase 3 - Provision of a further 24 Lodges with ecological enhancement & provision of Managers / Security Dwelling with linked 'Meet & Greet' Office at Florence Springs, Heatherton World of Activities, St.Florence, Tenby, SA708RJ		
Dwg No. P03	Job No. 1793	Paper A2
Rev.	Drawn PNW	Scale 1:1000
		Date NOV 2020

Hayston
 Developments & Planning Ltd

The Planning Studio, Hayston Bridge, Johnston, Haverfordwest, Pembrokeshire SA62 3JU
 01437 891 817
 07515 851 704
 andrew@haystonplanning.co.uk
 www.planningpembrokeshire.co.uk